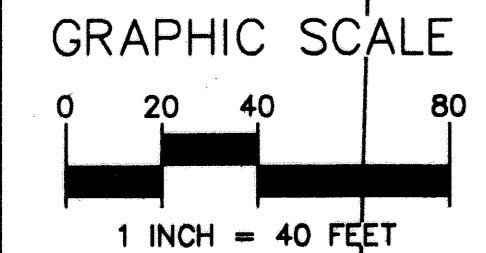
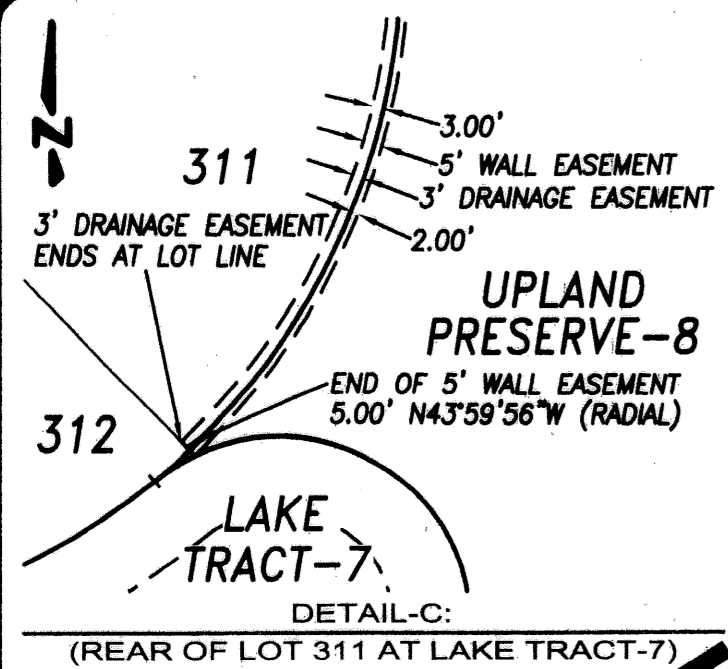


# PINES ON PENNOCK LANE P.U.D. PLAT No.2 (PASEOS)

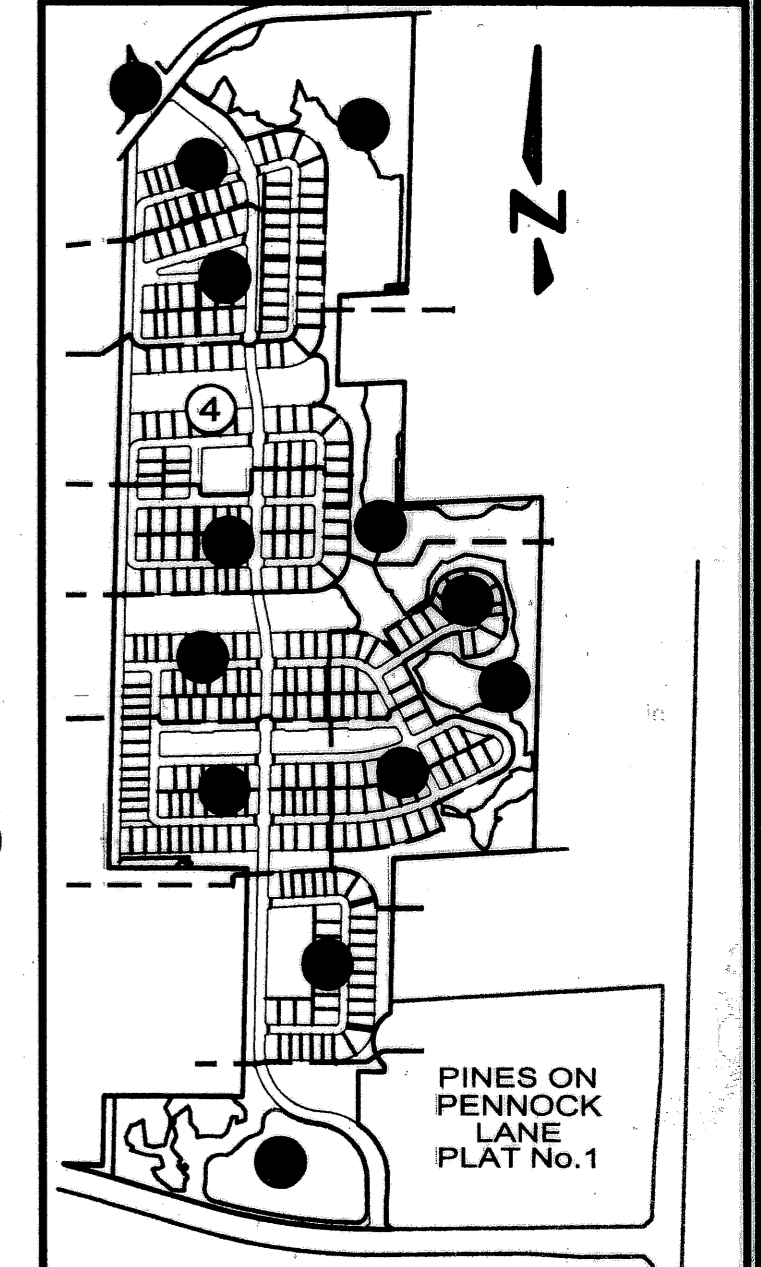
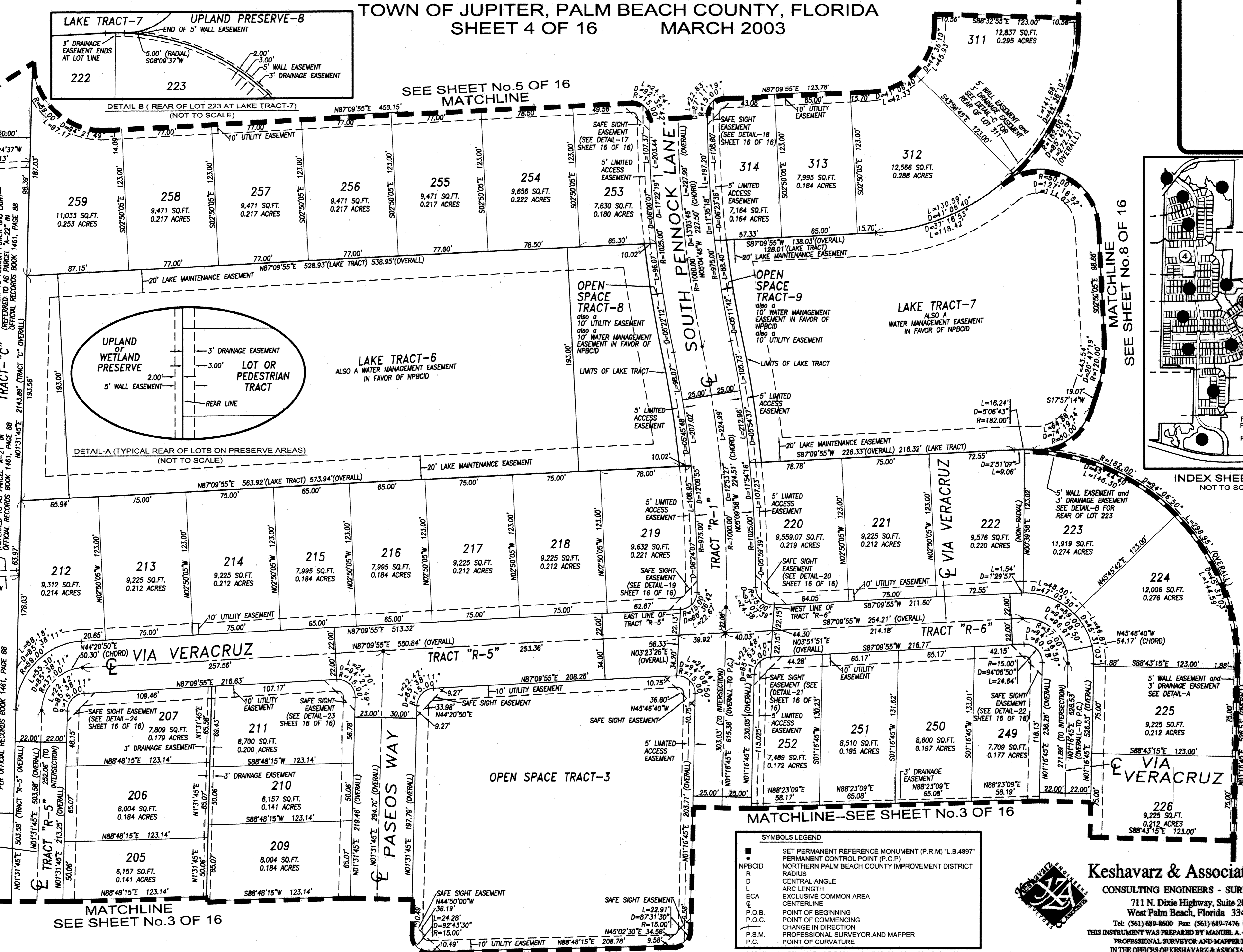
A PARCEL OF LAND LYING IN THE WEST HALF OF SECTION 12, THE NORTHWEST QUARTER OF SECTION 13, and THE NORTHEAST QUARTER OF SECTION 14, TOWNSHIP 41 SOUTH, RANGE 42 EAST  
TOWN OF JUPITER, PALM BEACH COUNTY, FLORIDA  
SHEET 4 OF 16 MARCH 2003



MAPLEWOOD PHASE ONE  
(PLAT BOOK 42, PAGES 63-65)



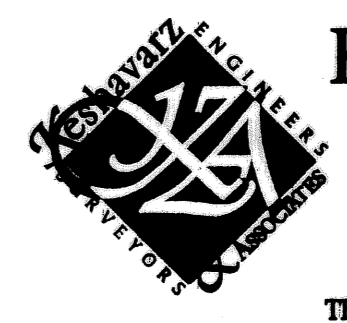
VIA VERACRUZ



**SYMBOLS LEGEND**

- SET PERMANENT REFERENCE MONUMENT (P.R.M.) "L.B. 4897"
- PERMANENT CONTROL POINT (P.C.P.)
- NPBCID NORTHERN PALM BEACH COUNTY IMPROVEMENT DISTRICT
- R RADIUS
- ∠ CENTRAL ANGLE
- L ARC LENGTH
- ECA EXCLUSIVE COMMON AREA
- CENTERLINE
- P.O.B. POINT OF BEGINNING
- P.O.C. POINT OF COMMENCING
- ↔ CHANGE IN DIRECTION
- P.S.M. PROFESSIONAL SURVEYOR AND MAPPER
- P.C. POINT OF CURVATURE

\*NOTE: ALL LOT LINES ARE RADIAL UNLESS OTHERWISE SPECIFIED.



**Keshavarz & Associates, Inc.**  
CONSULTING ENGINEERS - SURVEYORS  
711 N. Dixie Highway, Suite 201  
West Palm Beach, Florida 33401  
Tel: (561) 689-8600 Fax: (561) 689-7476 LB 4897  
THIS INSTRUMENT WAS PREPARED BY MANUEL A. GUTIERREZ, PSM  
PROFESSIONAL SURVEYOR AND MAPPER NO. 4102  
IN THE OFFICES OF KESHAVARZ & ASSOCIATES, INC.